



Brackley Road, London, W4

£750,000

WHITMAN & CO.

SALES · LETTINGS · COMMERCIAL

- Private landscaped garden
- 14' reception room
- 858' sqft of living space
- Sought-after residential road
- Fantastic transport links
- Share in the freehold

Tenure - Leasehold with Share of Freehold
 Lease length - 943 Years remaining
 Ground rent - Peppercorn
 Service charge- 50/50
 Local authority - Hounslow
 Council tax - Band E

THE PROPERTY

A well-presented two-bedroom garden flat, ideally located on a charming tree-lined residential street just south of Chiswick High Road. The property features two generously sized double bedrooms, two modern bathrooms, a bright 15' reception room, a separate study/occasional room, a well-appointed kitchen/breakfast room, a convenient utility area, and a rare private garden. Meticulously maintained and in excellent condition throughout, the flat also includes a share in the freehold. Perfectly situated in the heart of Chiswick, it offers close proximity to local amenities, shops, cafes, and excellent transport links.

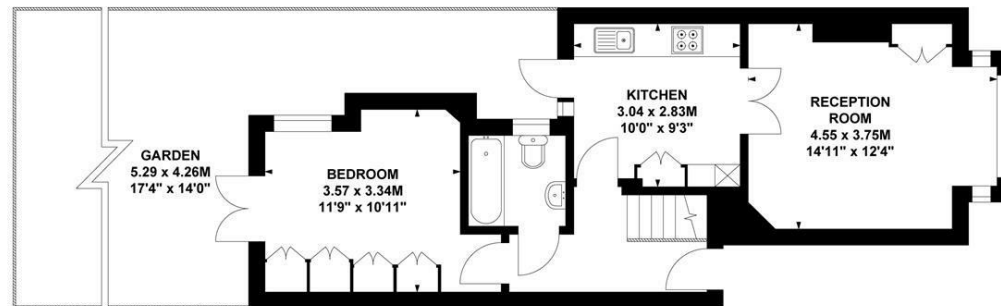


Brackley Road, W4

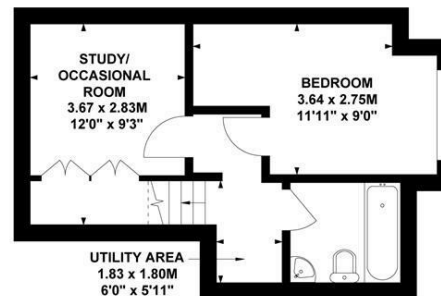
Approximate Gross Internal Area

79.7 sq m / 858 sq ft

Key :
 CH - Ceiling Height



Ground Floor



Lower Ground Floor

Not to scale, for guidance only and must not be relied upon as a statement of fact.
 All measurements and areas are approximate only

SITUATION



5-7 Turnham Green Terrace, Chiswick, London, W4 1RG

Tel 020 8747 8800

E-mail sales@whitmanandco.com

Website www.whitmanandco.com



MISREPRESENTATION ACT 1967

Whitman & Co. for themselves and for the vendors give notice that these particulars do not constitute any part of, an offer of contract. All statements contained in these particulars are made without responsibility on the part of Whitman & Co. or the vendor. None of the statements contained in these particulars is to be relied upon as statements or representations of facts. Any intending purchaser must satisfy himself by inspection or otherwise as to the correctness of each of the statements contained in these particulars. The vendor does not make or give, and neither Whitman & Co. or any person in their employment has any authority to make or give, any representation or warranty whatever in relation to the property.